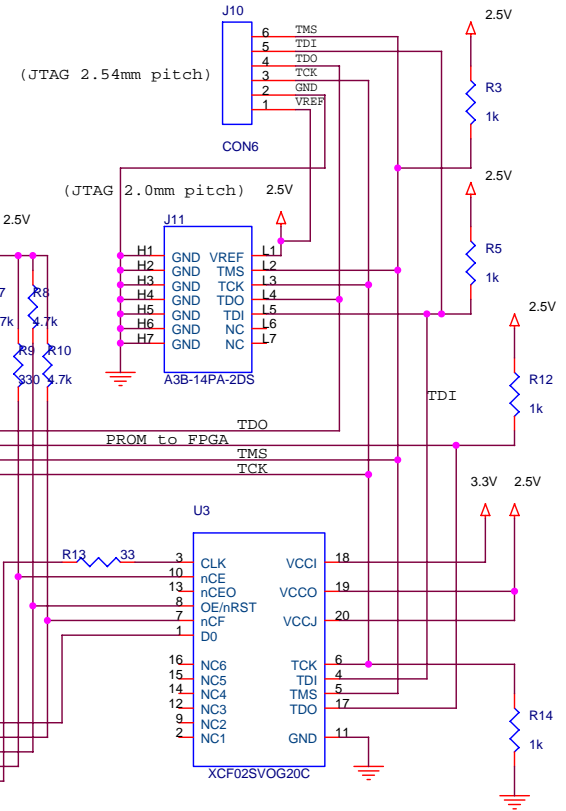
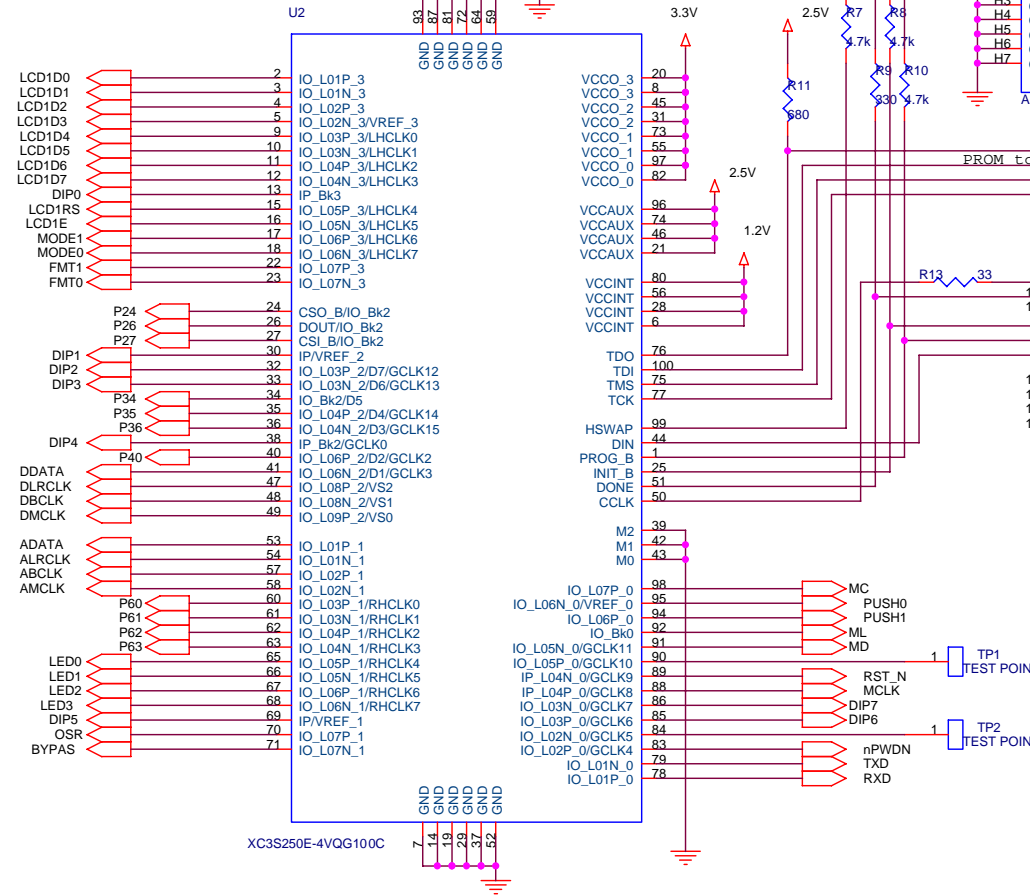
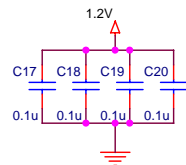
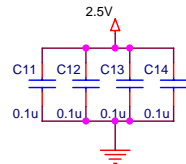
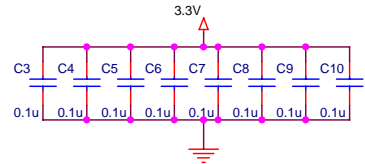
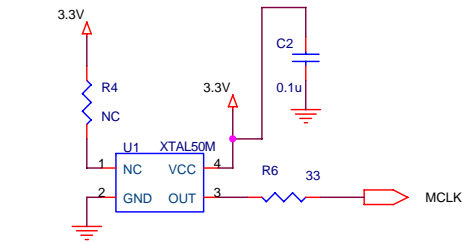
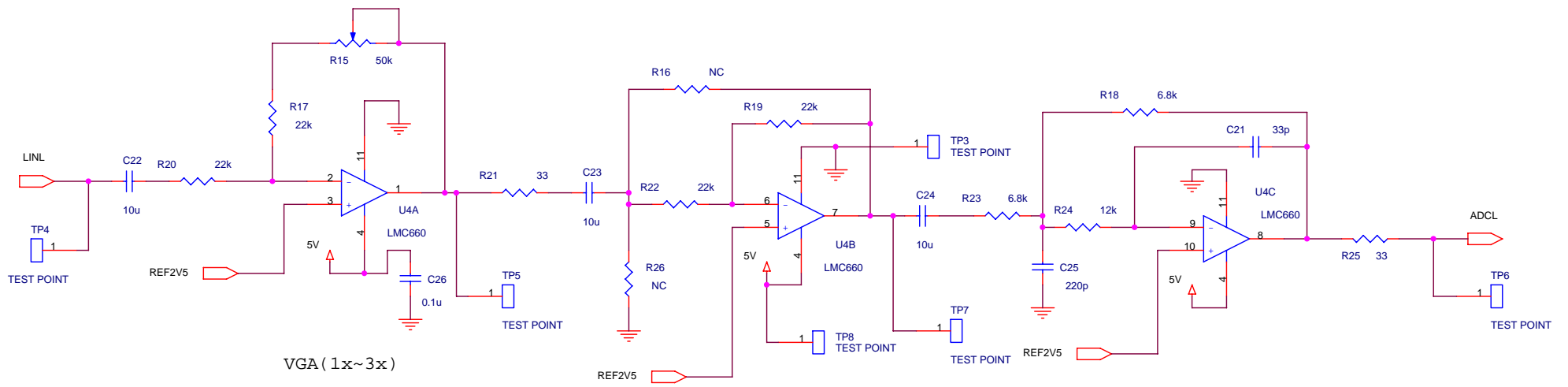


Title Connectors		
Size B	Document Number DFXLSP250	Rev 1.0
Date: Friday, May 22, 2009	Sheet 1	of 7

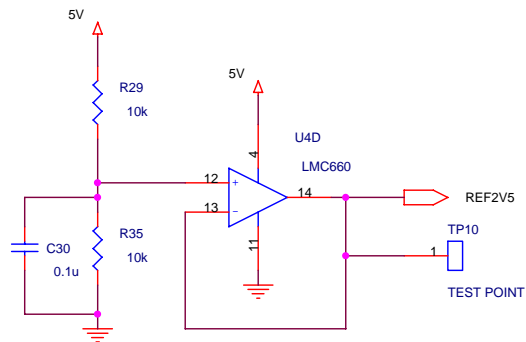


Title		
FPGA & Peripherals		
Size	Document Number	Rev
B	DFXLS250	1.0
Date:	Friday, May 22, 2009	Sheet 2 of 7

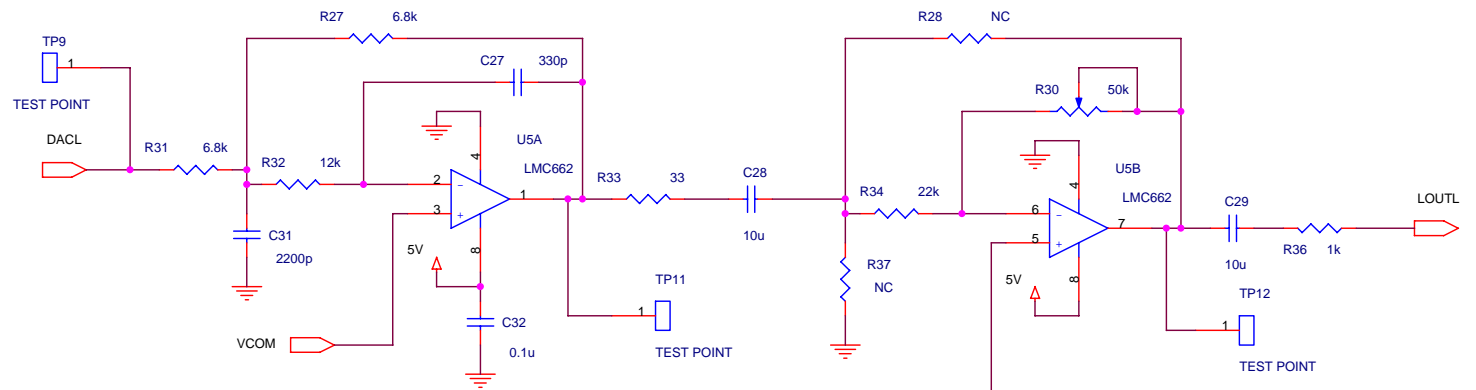


Buffer (can be LPF/HPF/AMP)

LPF (fc200kHz)



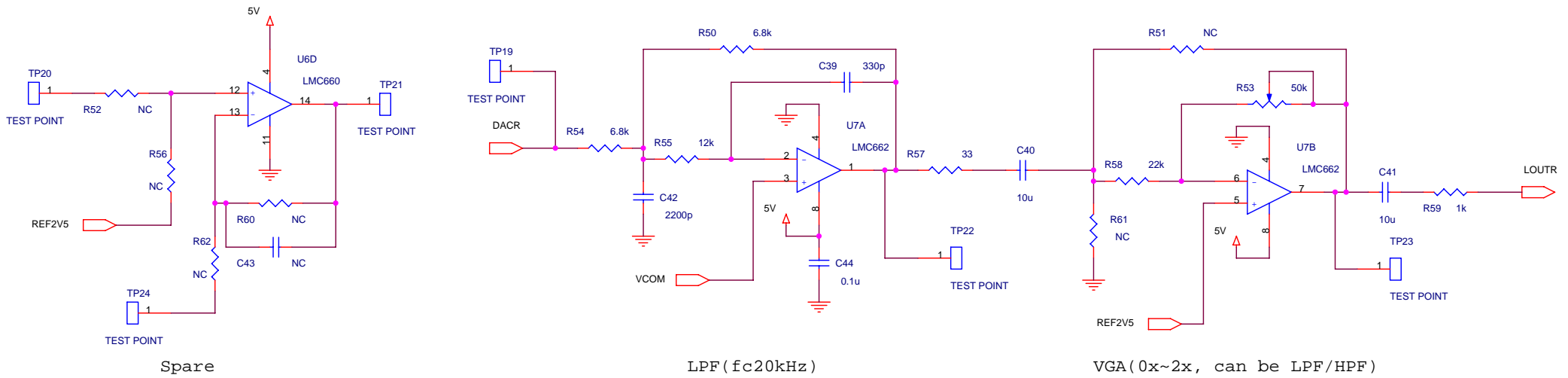
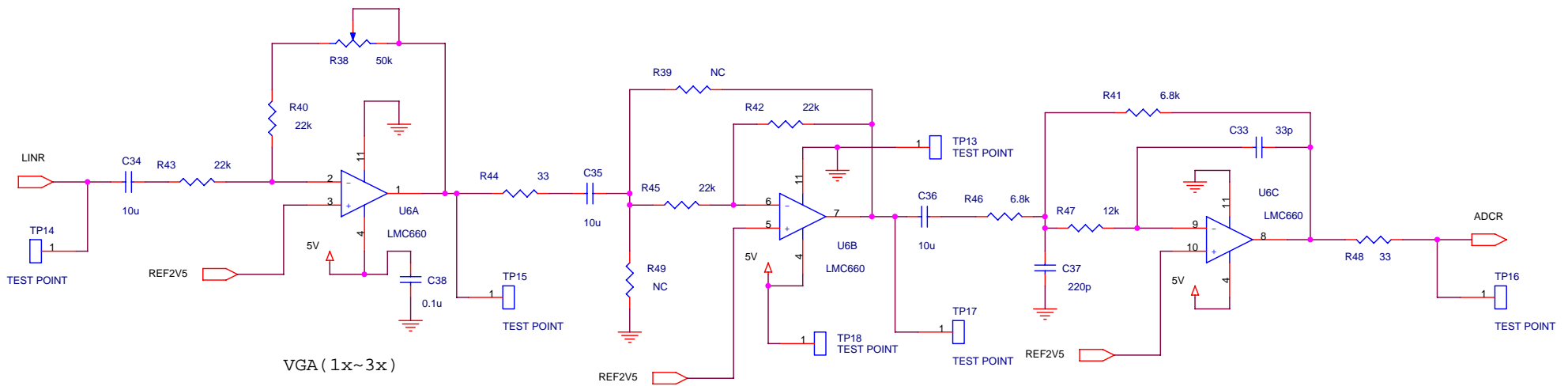
Reference (2.5V)



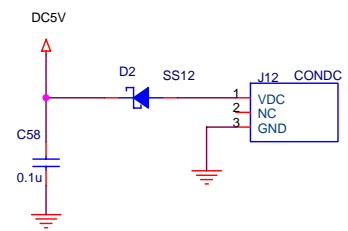
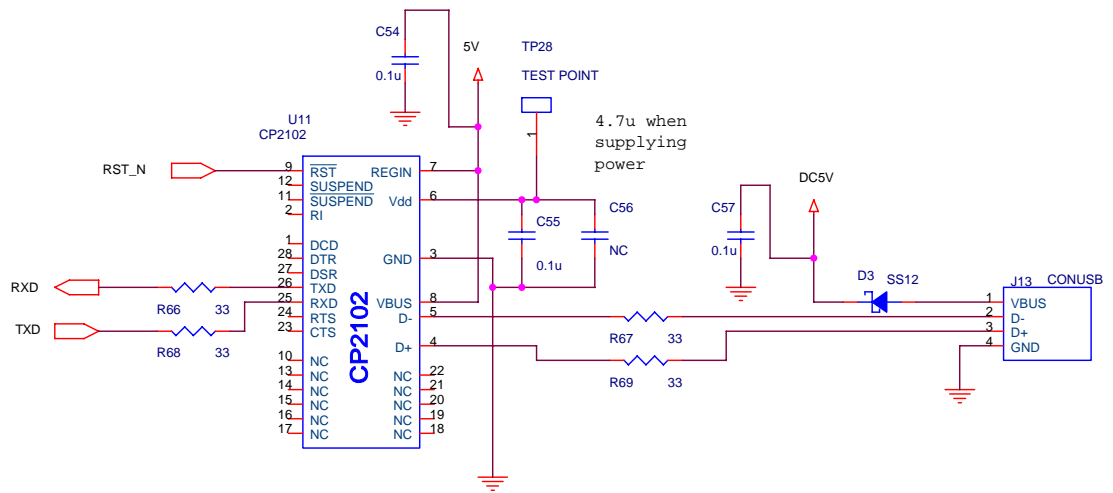
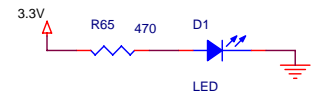
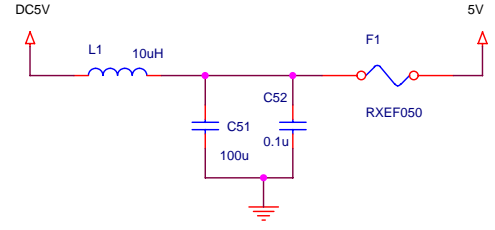
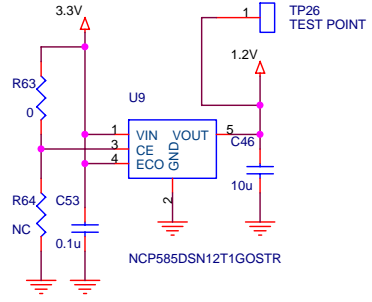
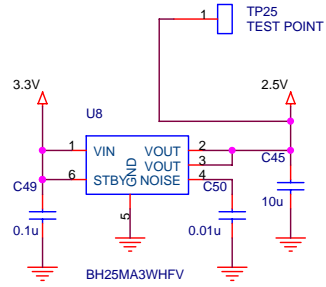
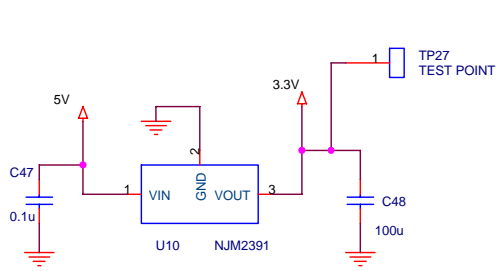
LPF (fc20kHz)

VGA (0x~2x, can be LPF/HPF)

Title		
OP Amps (Lch)		
Size	Document Number	Rev
B	DFXLSP250	1.0
Date:	Friday, May 22, 2009	Sheet 3 of 7

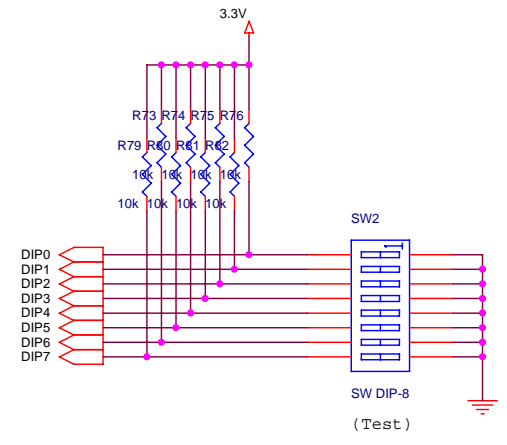
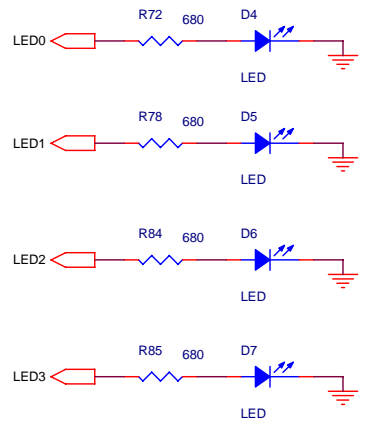
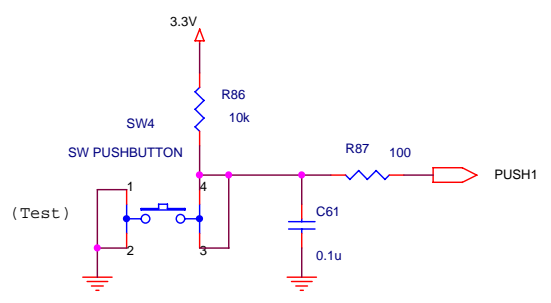
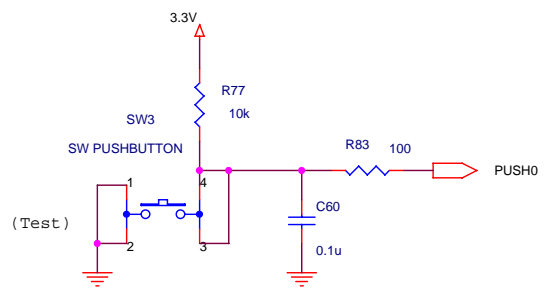
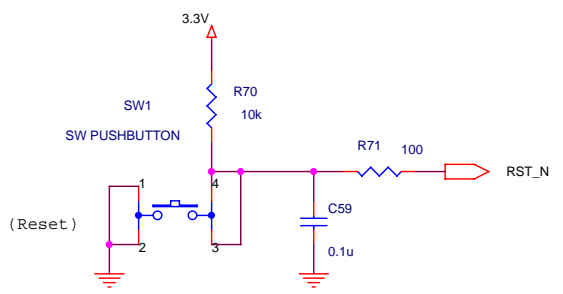


Title		
OP Amps (Rch)		
Size	Document Number	Rev
B	DFXLSP250	1.0
Date:	Friday, May 22, 2009	Sheet 4 of 7

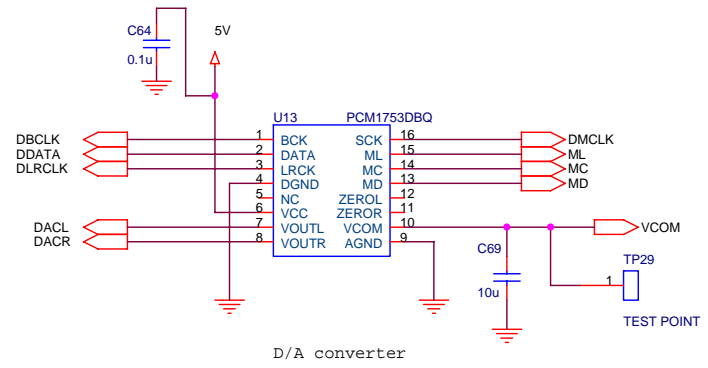
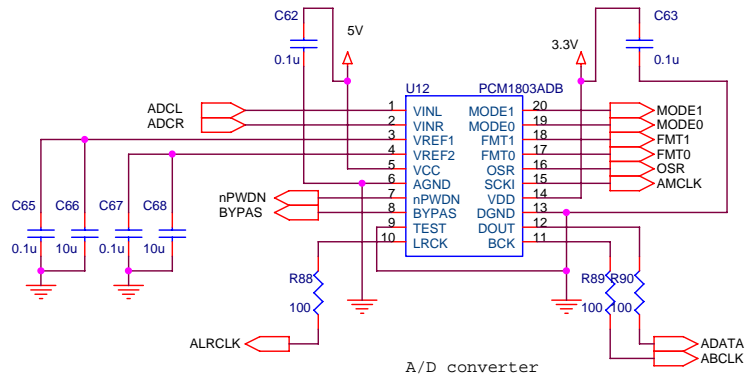


(not mounted)

Title		
DC & USB		
Size	Document Number	Rev
B	DFXLSP250	1.0
Date:	Friday, May 22, 2009	Sheet 5 of 7



Title		
Switch & LED		
Size	Document Number	Rev
B	DFXLSP250	1.0
Date:	Friday, May 22, 2009	Sheet 6 of 7



Title		
ADC & DAC		
Size	Document Number	Rev
B	DFXLSP250	1.0
Date:	Friday, May 22, 2009	Sheet 7 of 7